

SDV1111-A: LOW PROFILE, CEILING MOUNTING SUB-WOOFER SPEAKER

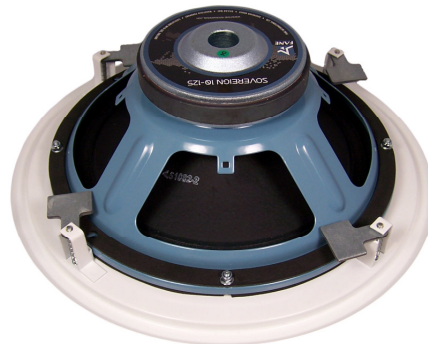
FEATURES

- **SIMPLE TO INSTALL**
- **PROVEN DESIGN**
- **USES THE RENOWNED “EMINENCE ALPHA 10” BASS DRIVER.**
- **DISCRETE**
- **HIGH QUALITY BASS REPRODUCTION**
- **INTEGRAL ACOUSTIC LENS TO OPTIMISE SOUND DISPERSION**
- **TAMPER EVIDENT**
- **AVAILABLE IN WHITE or BLACK¹**
- **EASY CONNECTIONS VIA SCREW TERMINATIONS**
- **ROBUST – BODY ALL METAL CONSTRUCTION.**
- **COMPACT FOOTPRINT**
- **COMPATIBLE WITH SDV1095-6 AMPLIFIER UNIT**
- **CAN BE COMBINED DIRECTLY WITH WALL OR OTHER CEILING MOUNTED SPEAKERS IN THE ECOTEC SYSTEMS LTD RANGE²**
- **LOW COST**

NOTES

- 1) **Other colours available to special order.**
- 2) See

SDV1100-A	Ceiling speaker
SDV1101-A	Wall speaker
SDV1102-A	Channel speaker



APPLICATIONS

- **RETAIL BACKGROUND MUSIC SYSTEMS**
- **BACKGROUND MUSIC SYSTEMS FOR LEISURE CLUBS**
- **BACKGROUND MUSIC SYSTEMS FOR RESTAURANTS AND BARS.**
- **MUSIC SYSTEMS FOR NIGHT CLUBS**
- **HOME CINEMA SYSTEMS**

DESCRIPTION

The SDV1111-A is a low profile, ceiling mounting sub-woofer. The speaker is designed to blend unobtrusively into mineral fibre (plasterboard) ceilings or ceiling tiles. For metal tile ceilings the SDV1073-A metal tile ceiling sub-woofer speaker should be considered.

The SDV1111-A sub-woofer can be driven by the EcoTec Systems Ltd class D amplifier unit (SDV1095-6-A). In addition to the sub-woofer, this amplifier can drive 2, 4 or 6 combinations of the SDV1100-A ceiling mounted speakers; the Bowman range of wall speakers (SDV1101-A); and the SDV1102-A ceiling channel speakers. For full details about the possible permutations of the EcoTec Systems Ltd speaker range, please contact EcoTec Systems Ltd or their authorised representative.

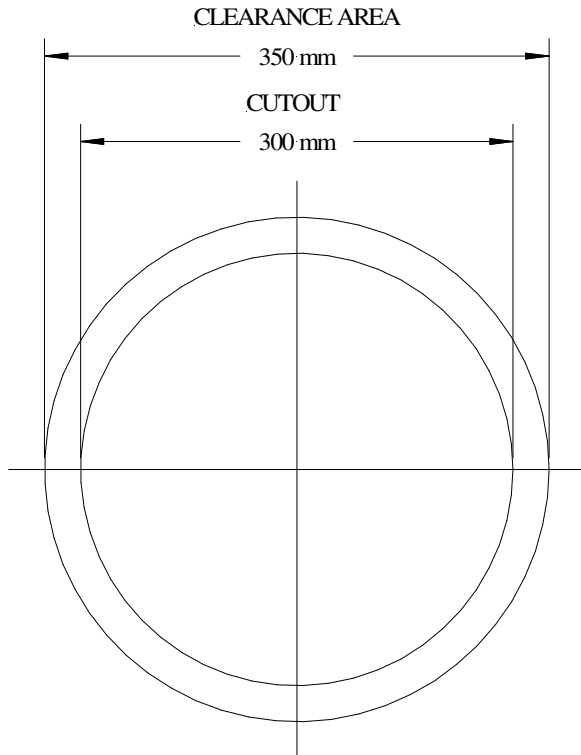
SPECIFICATIONS



Characteristics at a free air temperature of 25°C

PARAMETER	NOTES/TEST CONDITIONS	VALUE			UNIT		
		MIN	TYP	MAX			
P	POWER HANDLING			100	W		
W	WEIGHT	Excludes packaging			3	Kg	
Ø, H	DIMENSIONS	Diameter and height			320, 108	mm	
R	IMPEDANCE	Measured at 1KHz			8	Ω	
Fr	FREQUENCY RESPONSE	Driven with EcoTec Systems Ltd class D amp, Mounted in plasterboard ceiling.			45	5,000	Hz
SD	SENSITIVITY	Measured at 1m from speaker			97	dB	

Ceiling Cut-out Dimensions



Installation Notes

1. Cut out suitable size hole in ceiling as shown opposite.
2. Remove grille from speaker using a 2mm Allen key (retain screw for refitting later).
3. With the grille removed the 4 adjusting screws which control the mounting arms are visible.
4. Push the mounting tabs towards the centre as shown opposite.
5. Connect up speaker wires (black is in-phase +ve; yellow is out of phase -ve) to the amplifier cross-over.
6. Fit speaker into cut-out in the ceiling.
7. Rotate the adjuster screws using a 3mm Allen key to secure the Speaker into the ceiling.
8. Re-fit the grille using the screw removed in (2) above.
9. Clean surface of the grille and fit EcoTec Systems Ltd logo sticker over screw head in grille.



EcoTec Systems Ltd. reserve the right to change the products shown on this datasheet in the interest of improved specification. No responsibility is assumed for the use of information contained herein, nor for any infringement of patent or rights of others that may result from such use. No license is granted by implication or otherwise under any patent or patent right of EcoTec Systems Ltd.